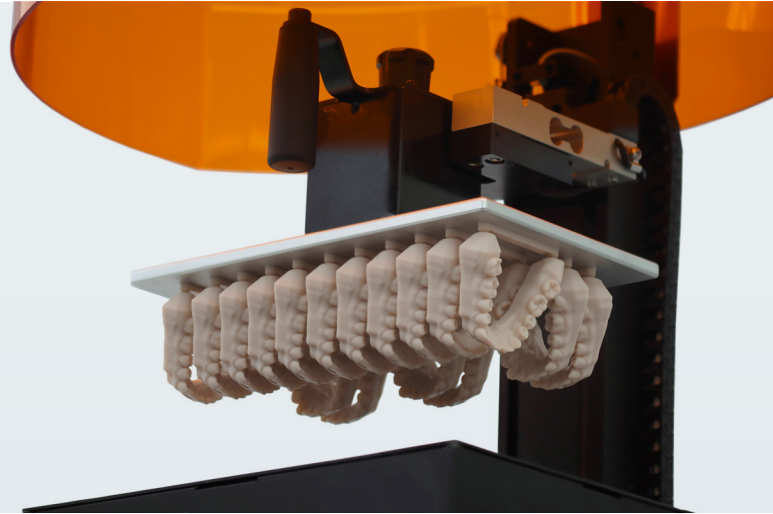


# Introducing Einstein™ Pro XL Dental 3D Printer

Your production-grade 3D printer built for reliability, uptime, and the consistent quality performance you deserve.



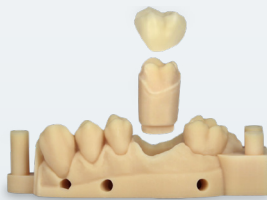
Based on 20+ years of R&D from industry leaders in 3D printing technologies, Desktop Health's Einstein Pro XL dental printer delivers high accuracy and high throughput, consistently, to keep your large-scale production on schedule.

## Predictable 3D printing

- Precision fit and finish with  $45\ \mu$  in XY
- Dual-linear slides for superior stability in Z
- Consistent, reliable uptime at an affordable price

## Made to fit your throughput needs

Improve overall efficiency and turnaround time with Einstein Pro XL's reliability to deliver low cost-per-print, high-accuracy models, night guards, surgical guides, dentures, teeth, and more.



**Dental crown and bridge quadrant models**  
46 quads in 61 minutes



**Full arch and orthodontic models**  
30 arches in 68 minutes



**Implant surgical guides**  
In development, coming soon



**Night guards and bite splints**  
52 Guards in 186 minutes



**Monolithic and try-in dentures**  
14 dentures in 79 minutes



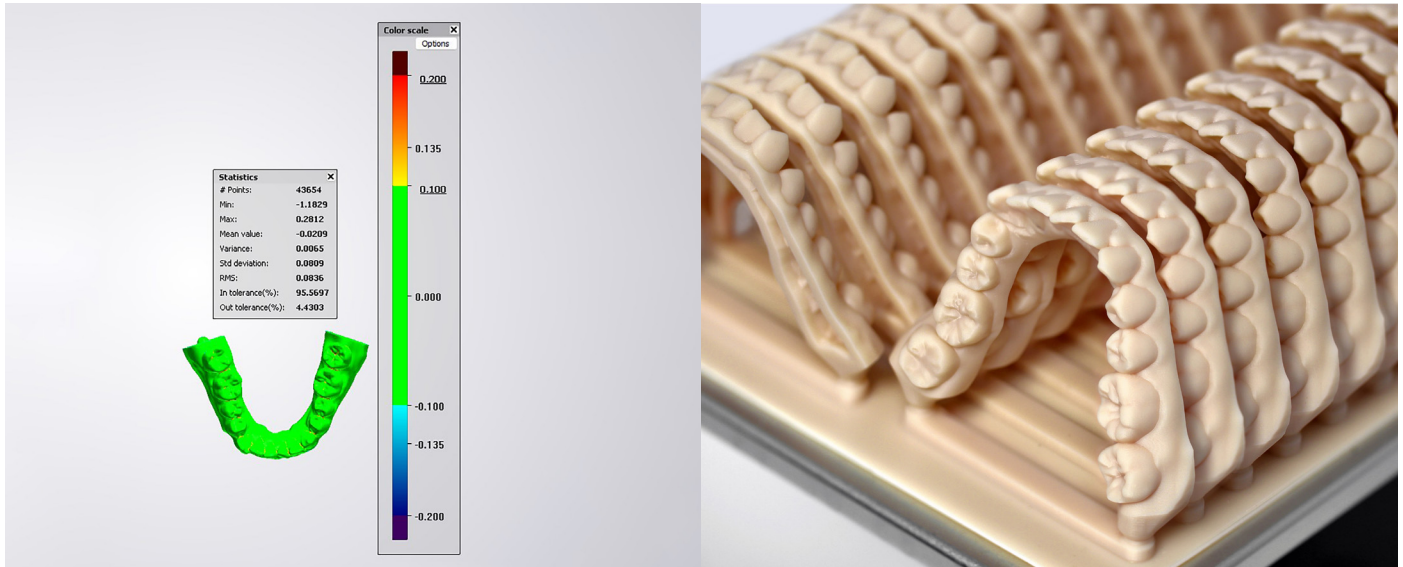
**Full and partial dentures**  
18 dentures in 130 minutes



**Temporary and permanent crowns**  
330 crowns in 32 minutes



**Full arch temporaries and artificial teeth**  
15 arches in 35 minutes



## Reliable, accurate performance

- Hundreds of hours of repeatable results
- Accuracy tolerance testing on 3Shape Convince software

## Superior surface resolution

- High-powered 4K 385 nm wavelength projector set up
- Minimal striations for easy finishing and perfect fit

### Einstein Pro XL technical specifications

<b>Technology</b>	Digital Light Processing (DLP®)
<b>HyperPrint™</b>	Heat + closed-loop printing
<b>NanoFit 385</b>	Custom LED 385nm wavelength
<b>Projector resolution</b>	4K UHD (3840 x 2160 px)
<b>Effective pixel size</b>	45 µm
<b>Native pixel size</b>	65 µm
<b>Build volume (X, Y, Z)</b>	9.8" x 5.5" x 6.5" (249.1 x 140.1 x 165.1 mm)
<b>Layer thickness options (material dependent)</b>	25, 50, 75, 100, 150 µm (optimized for each material part performance)
<b>Slides (Z-axis)</b>	Dual-linear for superior stability
<b>System footprint (X, Y, Z)</b>	35.4" x 23.6" x 59.8" (90 x 60 x 152 cm)
<b>System weight</b>	198.4 lbs (90 kg)
<b>Power requirements</b>	100-250V AC, 6.3A 50Hz/60Hz
<b>Network capabilities</b>	Wi-Fi, Ethernet port
<b>Included warranty</b>	1-year back to factory
<b>Technical support</b>	Monday-Friday, 8am-8pm EST

