

EF-ONE COMPACT POWERFUL BRILLIANT



HIGH-GLOSS FINISH AT THE PUSH OF A BUTTON

The EF-One is the ideal solution for dental and orthodontic laboratories. Its compact design and outstanding price-performance ratio make it easy for small businesses to enter the world of automated surface finishing.

ADVANTAGES OF THE EF-ONE

- **Plug-and-Play-System**

Fast and easy commissioning saves time and reduces training efforts..

- **Eight pre-installed programs**

These can be used without special expertise, making the EF-One ideal for beginners and smaller labs.

- **Intelligent Media Container Recognition**

The container stores information about the process media and operating hours, enabling the activation of the corresponding functions. Automated assignment ensures that only compatible OTEC process media are approved.

- **Guide-through-Menu**

A user-friendly navigation system guides the operator through functions, minimizes errors, and enhances production efficiency.



PERFECT SURFACES. WORLDWIDE.

Made
in
Germany

INNOVATIVE & SUSTAINABLE

- High quality and cost efficiency through process optimization
- Safe, eco-friendly process – no need for polishing or acid baths
- All-in-one system, suitable for processing CoCr and titanium

WIDE RANGE OF INDICATIONS

Custom workpiece holders for various applications:

- Crowns and bridges
- Suprastructures
- RPDs & cast partial dentures
- Orthodontic components such as GNEs and molar bands

Processing per cycle:

- 1 cast partial denture
- Up to 4 orthodontic parts simultaneously

Optimized container system:

- Fast media changes

IDEAL FOR SMALLER LABS

- Optimized for dental and orthodontic labs
- 70% less manual effort for technicians
- Standalone unit for automated surface finishing
- Attractive price-performance ratio



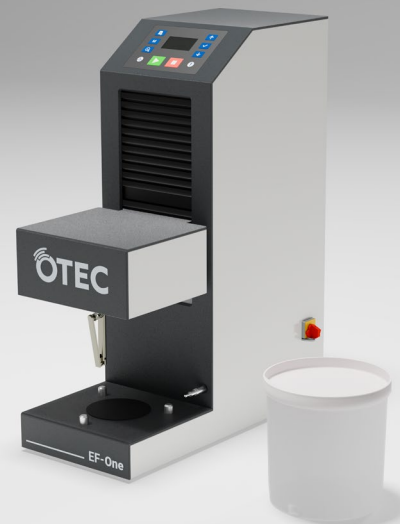
THE SMART CHOICE FOR MODERN LABS

The EF-One combines precision, sustainability, and automation in a compact and affordable system—ideal for small and mid-sized dental and orthodontic laboratories. Additionally, it enables seamless processing of CoCr and titanium, a unique feature in its price segment.

Discover OTEC's superior high-gloss results!

Based on your requirements, we develop customized solutions in our Finishing Center.

OTEC Dealer



As a global partner for perfect surfaces, OTEC designs and manufactures finishing machines that set innovative standards and ensure maximum process reliability. By revolutionizing manual finishing processes, OTEC delivers precise and consistent results with smooth surfaces, defined edge rounding, deburring, and a perfect shine – creating a competitive advantage across various industries. This results in energy savings, longer tool life, and increased durability of components.

OTEC machines, "Made in Germany," stand for reliable technology, high-quality craftsmanship, continuous operation, and long service life.

OTEC
PRECISION FINISHING SOLUTIONS

proto3000
ISO 9001:2015

Made
in
Germany